



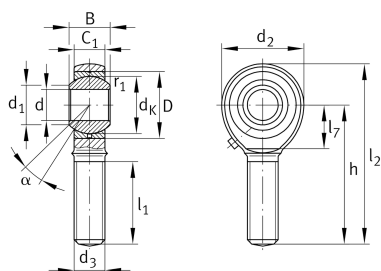
## GAKL20-PB

Rod end

Schaeffler ID:  
0066333740000

Rod end with external thread, left hand thread, requiring maintenance, sliding contact surface: steel/bronze, DIN ISO 12240-4, dimension series K, type M, open design

### Technical information



### Main Dimensions & Performance Data

d	20 mm	Bore diameter bearing
D	40 mm	Outside diameter bearing
B	25 mm	Width inner ring
$C_r$	31,400 N	Basic dynamic load rating, radial
$C_{0r}$	45,600 N	Basic static load rating, radial
	0.385 kg	Weight

### Dimensions

$d_K$	34.925 mm	Ball diameter
$d_1$	24.3 mm	Outer flange diameter inner ring
$d_2$	50 mm	Outer eye diameter
$d_3$	M20x1,5	Thread size
h	78 mm	Shank Length External thread rod
$C_1$	18 mm	Width of the rod end
$\alpha$	14 °	Tilt angle
$l_1$	45 mm	Shank Length External thread head
$l_2$	103 mm	Total length external thread head
$l_7$	26 mm	Distance drilling with/shaft start
$G_r$	0 - 0,035 mm	Radial Clearance
$d_{OT}$	0.021 mm	Bore diameter bearing, upper tolerance
$d_{UT}$	0 mm	Bore diameter bearing, lower tolerance
$d_T$	H7 mm	Bore diameter bearing, tolerance
$B_{OT}$	0 mm	Width inner ring, upper tolerance
$B_{UT}$	-0.12 mm	Width inner ring, lower tolerance

### Mounting dimensions

$r_{1smin}$	0.3 mm	Edge Spacing
-------------	--------	--------------

**Temperature range**

T <sub>min</sub>	-60 °C	Operating temperature min.
T <sub>max</sub>	250 °C	Operating temperature max.